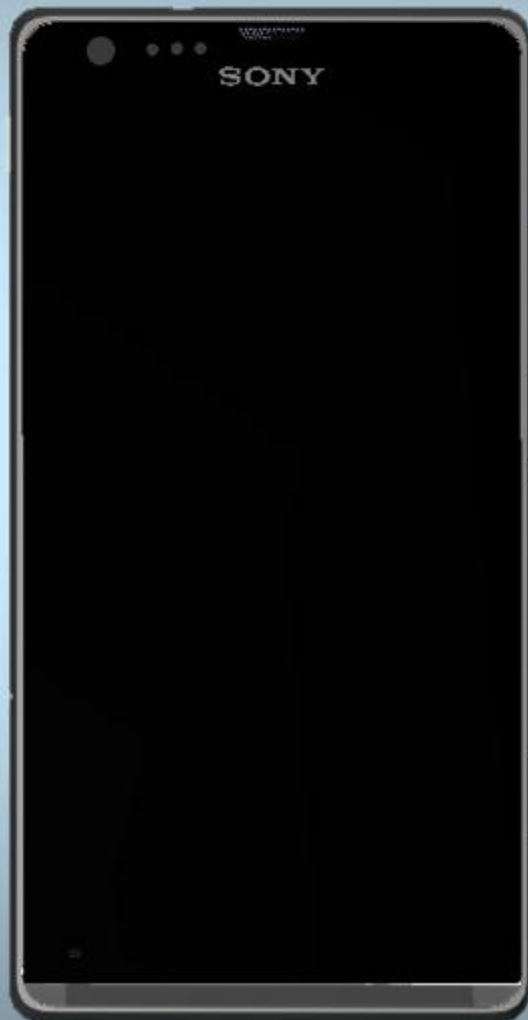


Component Replacement

- electrical -



Xperia™ SP

C5302/C5303/C5306/M35c/M35h and M35t

CONTENTS

1 Replaceable Components 3

2 Component Placing..... 5

3 Additional Repair info 6

4 Revision History 13

For general information about electrical repair related issues, refer to 1220-1336: Generic Repair Manual - electrical

Test after electrical replacement: refer to 1273-1772 Mechanical Test Instruction

Do not remove shield can lids (Heat pasta are added and RF performance will be damaged)

1 Replaceable Components

EXPLANATION OF ABBREVIATIONS USED IN THE COLUMN 'COMMENTS' BELOW

COMPONENT LOCATION

P = Primary side

S = Secondary side

REPAIR METHOD

HA = Hot Air (removal & mounting)

ST = Soldering Tool (removal & mounting)

HA/ST = Hot Air for removal - Soldering Tool for mounting

BGA = BGA Station

BH = Bottom Heater

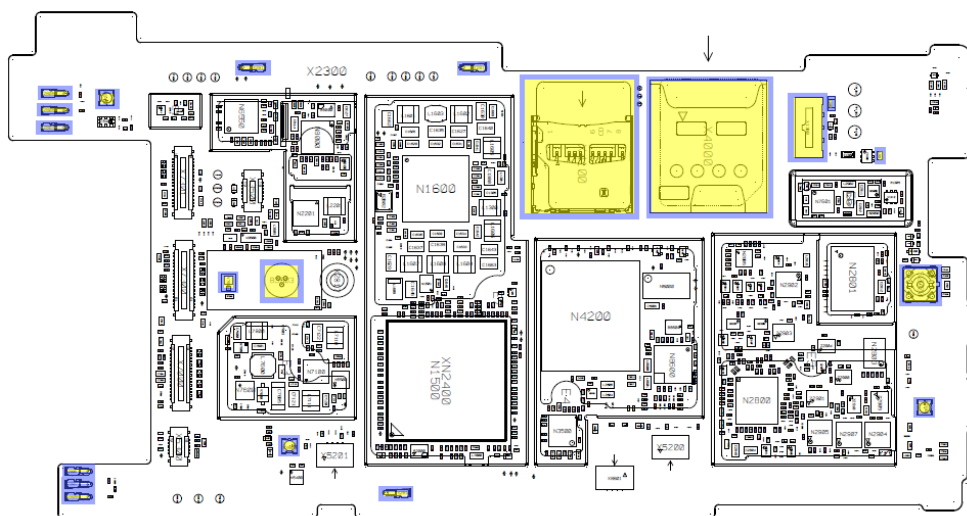
ADDITIONAL INFORMATION

⇒1 (2,3,4, etc.) = Proceed to 'Additional Repair Info' for further instructions in the indicated section(s).

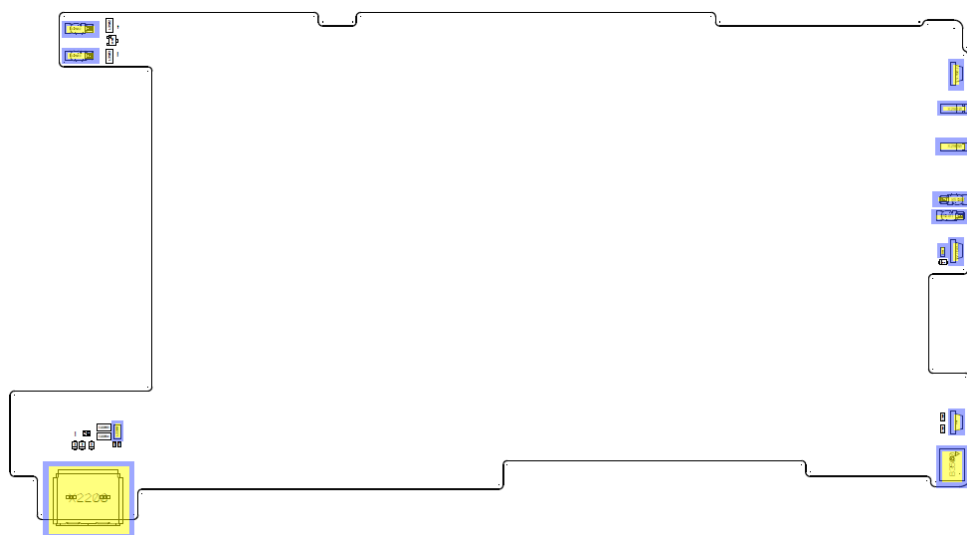
| Position | 1264-2635 | Part no. | Comments |
|--------------|--|------------------|---------------------------|
| B3500 | Mic 3.76 Silicon LT25 | 1264-2635 | S HA+BH or BGA ⇨22 |
| B3503 | Mic 4.0 Electret diam 4.0 x 1.3 analog t | 1224-0804 | P HA+BH ⇨1 |
| L2200 | Filter 220ohm 0603 2A 0.05ohm Bead | 1001-1896 | S HA+BH ⇨2 |
| L5101 | Ferrite B 1.5 kOhm 100.0 mA 0402 | 1001-1223 | P HA+BH ⇨3 |
| L5102 | Ferrite B 0.0 Ohm 0.0 A 600ohm 0402 0.3A | 1000-0132 | S HA+BH ⇨4 |
| R1300 | Resistor 0.01 Ohm +/-1% 200.0 mW (1.6x0. | 1238-2147 | P HA+BH ⇨5 |
| S2000 | Input Switch Push/Shielded top push swit | 1200-5025 | P HA+BH ⇨6 |
| V7602 | LED Multi-color 2,7mm x 1,35mm x 0,8mm S | 1267-3674 | S HA+BH ⇨7 |
| V7603 | LED Multi-color 2,7mm x 1,35mm x 0,8mm S | 1267-3674 | S HA+BH ⇨7 |
| V7604 | LED Multi-color 2,7mm x 1,35mm x 0,8mm S | 1267-3674 | S HA+BH ⇨7 |
| V7800 | LED White 1.63 x 2.03 x 0.75 mm Flash LE | 1267-1941 | P HA+BH ⇨8 |
| X1300 | Conn BtB Receptacle 3p Battery mating he | 1252-4072 | P HA+BH ⇨9 |
| X2200 | Conn USB micro B Receptacle 5p Conn USB | 1264-0336 | S HA+BH or BGA ⇨10 |
| X2800 | Conn Leaf Spring 1p | 1201-4841 | S HA+BH ⇨11 |
| X2801 | Conn Coax Receptacle 1p | 1237-5326 | P HA+BH ⇨12 |
| X2803 | Conn Coax Receptacle 1p | 1237-5326 | P HA+BH ⇨13 |
| X2804 | Conn Leaf Spring Plug 1p Antenna/GND Spr | 1239-2123 | S HA+BH ⇨14 |
| X2805 | Conn Leaf Spring Plug 1p Antenna/GND Spr | 1239-2123 | P HA+BH ⇨14 |
| X2806 | Conn Leaf Spring Plug 1p Antenna/GND Spr | 1239-2123 | P HA+BH ⇨14 |
| X2807 | Conn Leaf Spring Plug 1p Antenna/GND Spr | 1239-2123 | P HA+BH ⇨15 |
| X2808 | Conn Leaf Spring Plug 1p Antenna/GND Spr | 1239-2123 | P HA+BH ⇨15 |
| X2809 | Conn Leaf Spring Plug 1p Antenna/GND Spr | 1239-2123 | P HA+BH ⇨15 |
| X2810 | Conn Leaf Spring 1p | 1201-4841 | S HA+BH ⇨11 |
| X2812 | Conn Leaf Spring Plug 1p Antenna/GND Spr | 1239-2123 | P HA+BH ⇨16 |
| X2813 | Conn Leaf Spring Plug 1p Antenna/GND Spr | 1239-2123 | P HA+BH ⇨16 |
| X2814 | Conn Leaf Spring Plug 1p Antenna/GND Spr | 1239-2123 | P HA+BH ⇨16 |
| X3502 | Conn Leaf Spring Plug 1p Antenna/Groundi | 1238-5876 | S HA+BH ⇨17 |
| X3503 | Conn Leaf Spring Plug 1p Antenna/Groundi | 1238-5876 | S HA+BH ⇨17 |
| X4000 | Card Conn SIM Micro SIM, Push-Pull, w/o | 1253-8580 | P HA+BH or BGA ⇨18 |
| X4100 | Conn Other 0p Card Conn Micro SD | 1262-2506 | P HA+BH or BGA ⇨19 |
| X5101 | Conn Leaf Spring Plug 1p Antenna/Ground | 1238-5876 | S HA+BH ⇨20 |
| X5102 | Conn Leaf Spring Plug 1p Antenna/Groundi | 1238-5876 | S HA+BH ⇨20 |
| X8401 | Conn Coax Receptacle 1p | 1237-5326 | P HA+BH ⇨21 |

2 Component Placing

To access the Component Placing document, double-click the icon below.
Applicable for on-screen viewing only – icon not shown on hard-copies.



Primary side



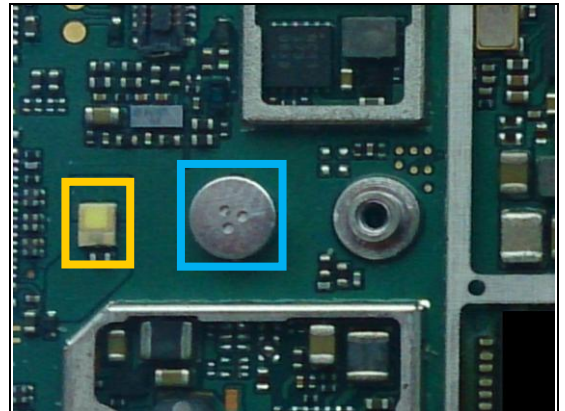
Secondary side

3 Additional Repair info

1

B3503

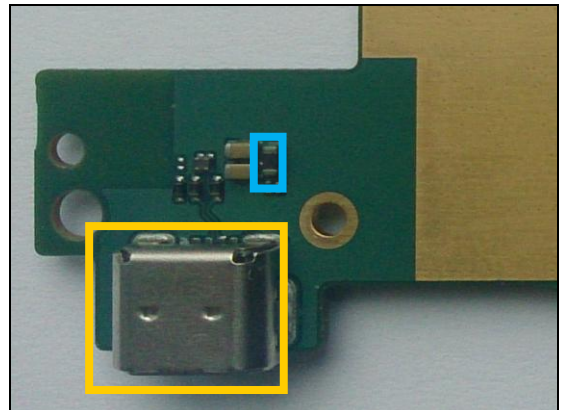
Replace if no audio from secondary mic
Protect the Flash LED with capton tape!
When replacing protect secondary mic with capton tape!



2

L2200

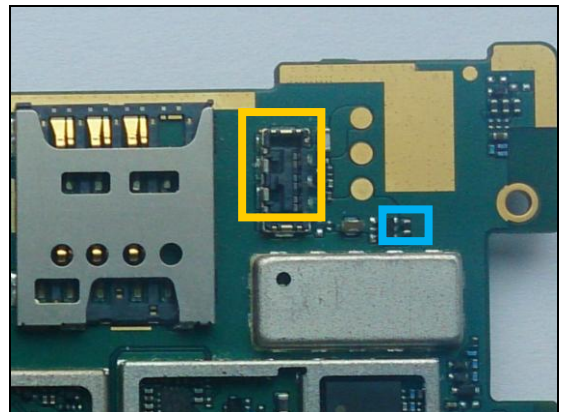
Replace if open circuit (USB charger not working)
Protect the USB connector with capton tape!



3

L5101

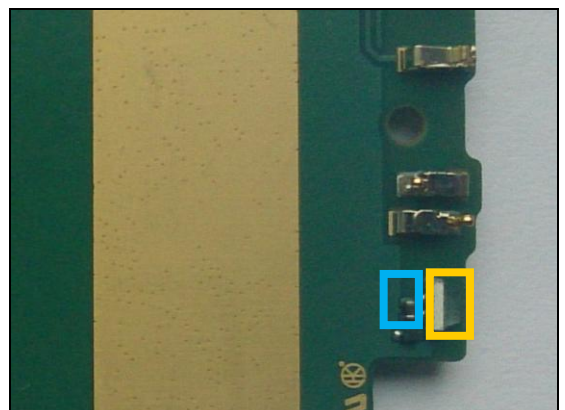
Replace if open circuit (Vibrator not working)
Protect the BtB connector with capton tape!



4

L5102

Replace if open circuit (Vibrator not working)
Protect the LED with capton tape!



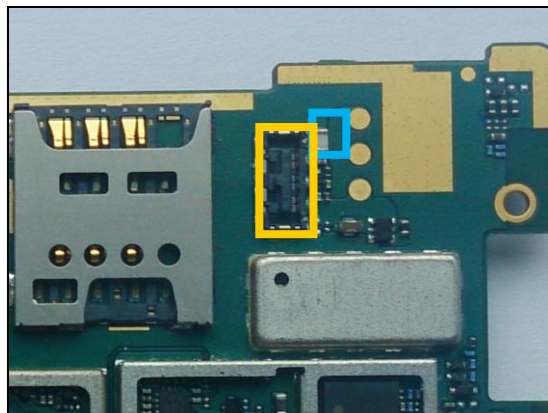
Repair Actions: Additional Repair Info

5

R1300

Replace if open circuit (Phone dead)

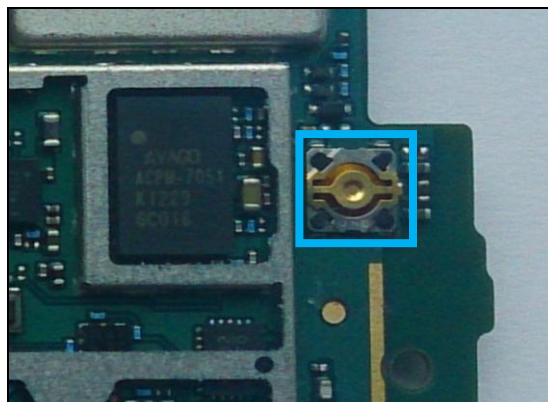
Protect the BtB connector with capton tape!



6

S2000

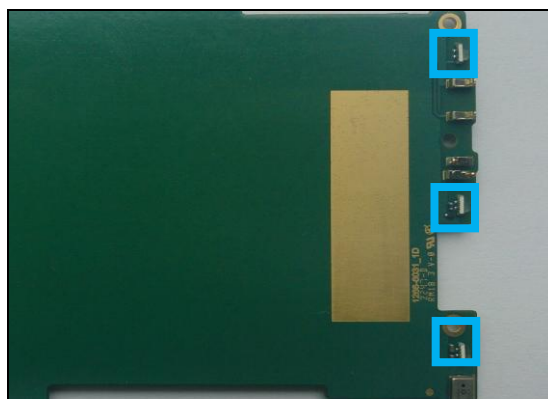
Replace if mechanical damaged (Reset not working)



7

V7602, V7603, V7604

Replace if Led not working

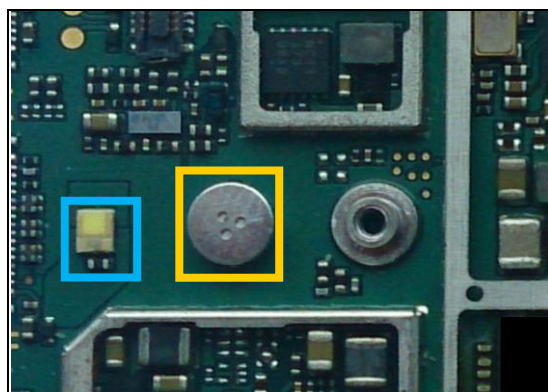


8

V7800

Replace if Flash LED not working

Protect the Mic with capton tape!



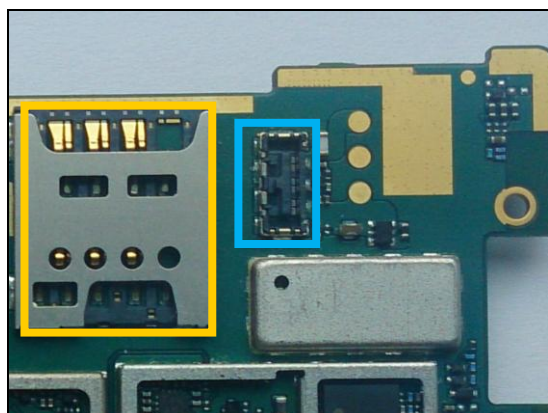
Repair Actions: Additional Repair Info

9

X1300

Replace if mechanical damaged. (Phone dead or power off)

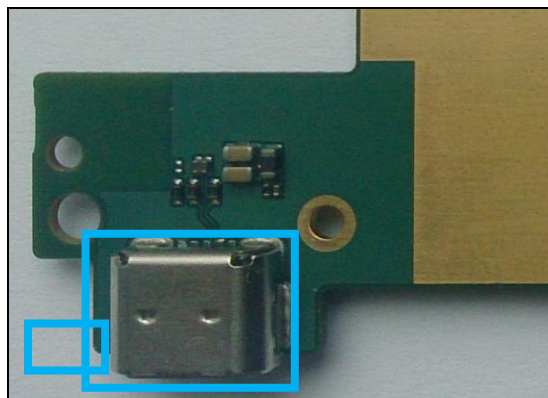
Protect the SIM card connector with capton tape!



10

X2200

Replace if mechanical damaged (USB charger or data transfer not working)

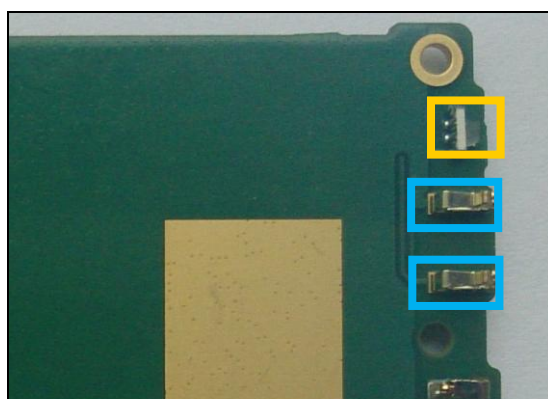


11

X2800, X2810

Replace if mechanical damaged (No or bad network, main antenna)

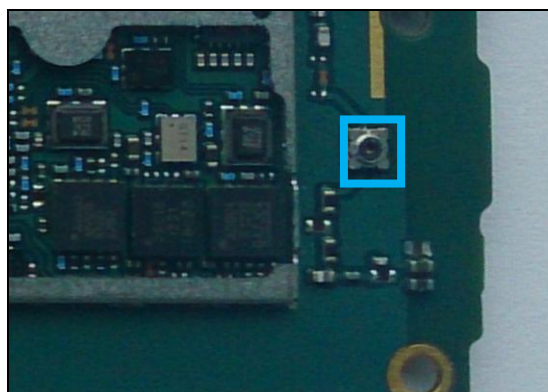
Protect the LED with capton tape!



12

X2801

Replace if open circuit 1-2 (No or bad network, main antenna)



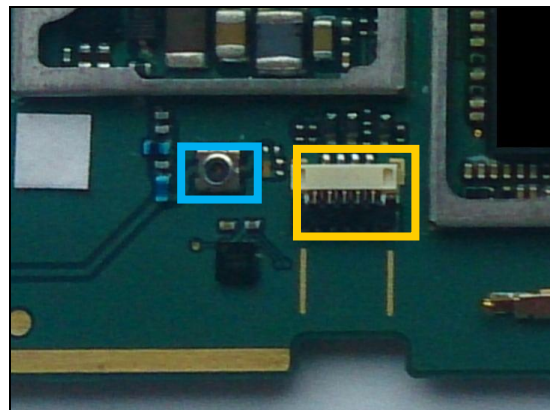
Repair Actions: Additional Repair Info

13

X2803

Replace if open circuit 1-2 (Bad network, secondary antenna)

Protect the BtB connector with capton tape!

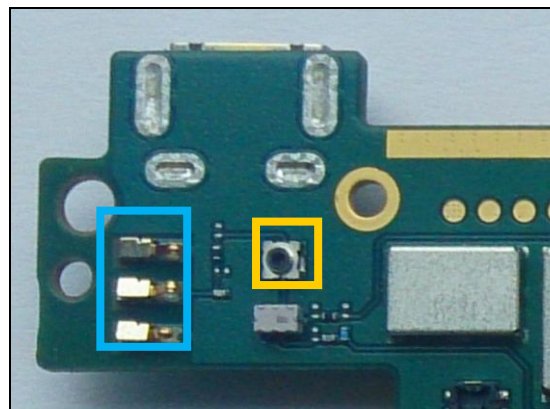


14

X2804, X2805, X2806

Replace if mechanical damaged (No or bad GPS)

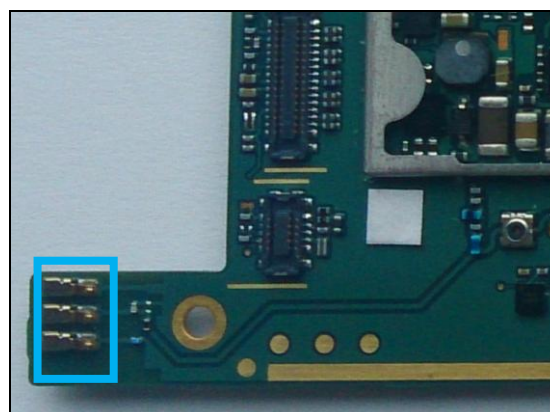
Protect the Coax connector with capton tape!



15

X2807, X2808, X2809

Replace if mechanical damaged (Bad network, secondary antenna)

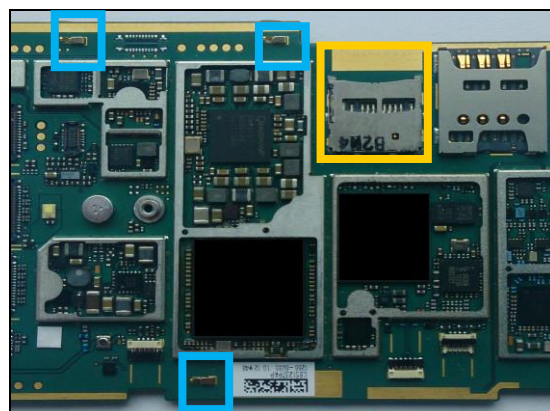


16

X2812, X2813, X2814

Replace if mechanical damaged (Bad network, grounding pins)

Protect the SD card connector with capton tape!

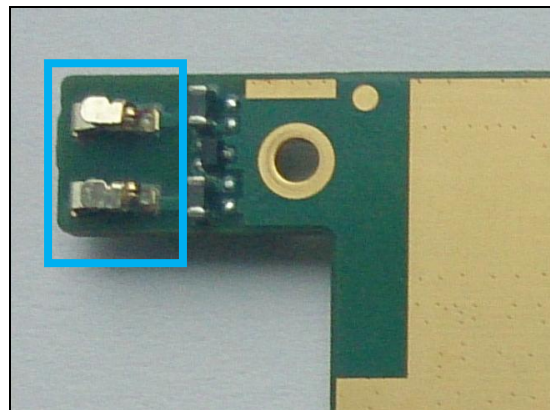


Repair Actions: Additional Repair Info

17

X3502, X3503

Replace if mechanical damaged (No right speaker)

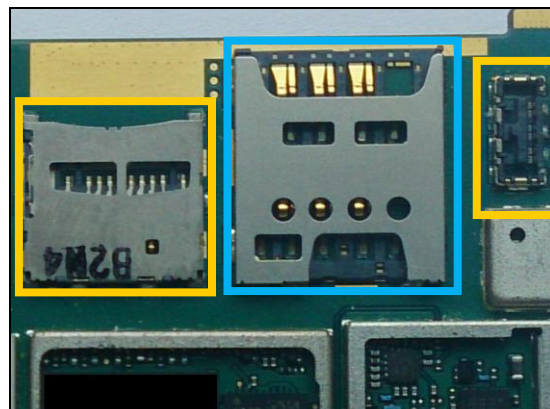


18

X4000

Replace if mechanical damaged (No network, restart, No SIM card inserted)

Protect the SD and BtB connectors with capton tape!

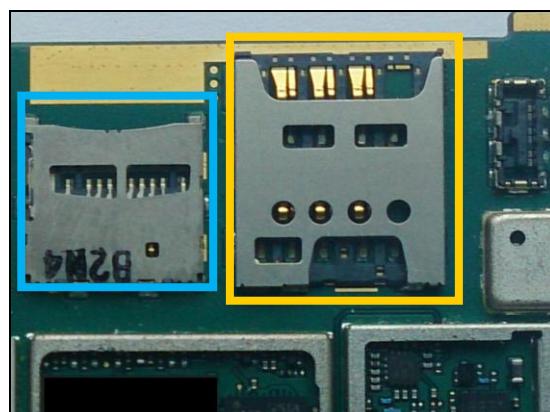


19

X4100

Replace if mechanical damaged (No SD card)

Protect the SIM connector with capton tape!

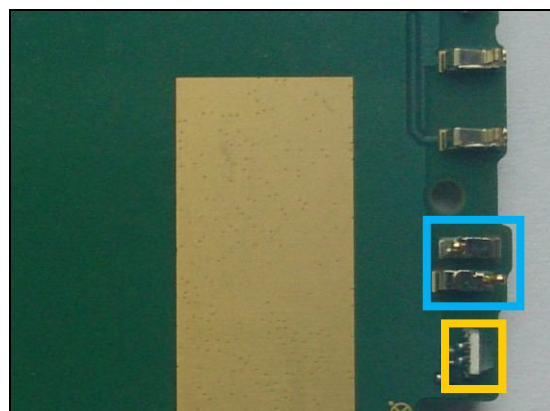


20

X5101, X5102

Replace if mechanical damaged (Vibrator not working)

Protect the LED with capton tape!

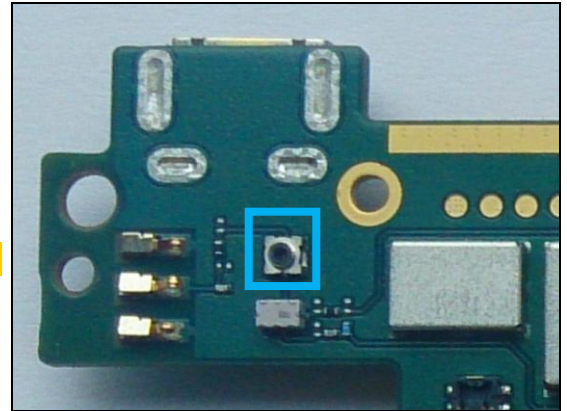


Repair Actions: Additional Repair Info

21

X8401

Replace if open circuit 1-2 (No or bad GPS)



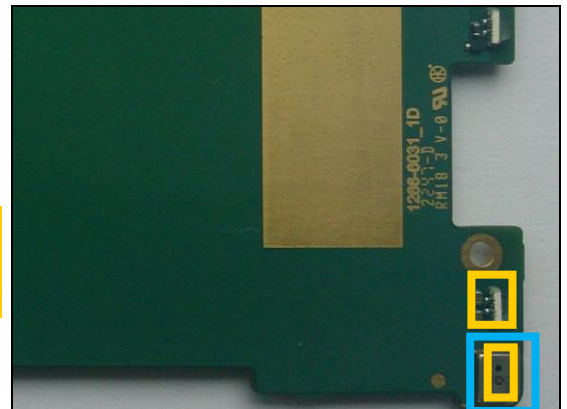
22

B3500

Replace if no audio from primary mic.

Protect the LED with capton tape!

When replacing protect primary mic with capton tape!



4 Revision History

| Rev. | Date | Changes / Comments |
|------|------------|--------------------|
| 1 | 2014-04-16 | Initial release |
| 2 | 2014-07-11 | B3500 added |